

Accumulo coibentato per acqua tecnica calda e fredda
Primary heating and cooling storage tanks

SERBATOI ACCUMULO BUFFER TANKS

SS-TNK



Capacità - Capacity: 20 - 40 - 100 - 200 - 300 - 500 - 600 - 800 - 900 Litri - Litres

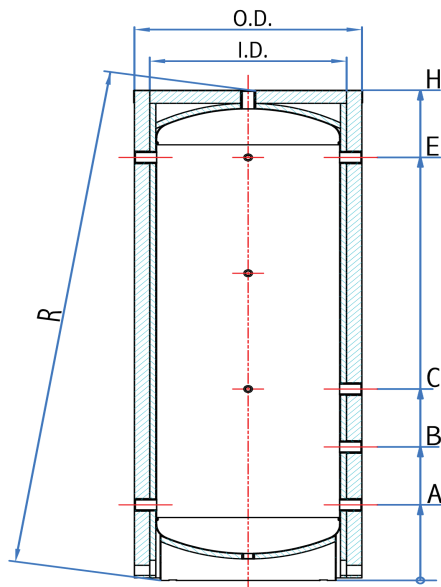
INFORMAZIONI GENERALI - GENERAL FEATURES

Termoaccumulatori realizzati in acciaio inossidabile A316L serbatoi idonei per impianti di raffrescamento a pannelli radianti.

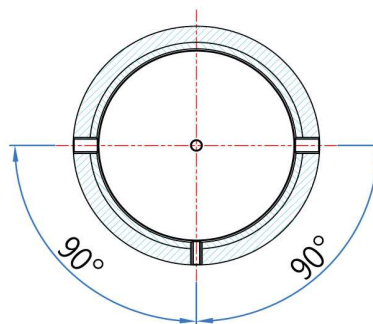
Buffer Tanks made from stainless steel A316L range for radiant cooling applications.

DIMENSIONI - DIMENSIONAL DATA

SS - TNK 100 - 900



		100	200	300	500	600	800	900
Ritorno primario Primary return	A	1 1/4"	1 1/4"	1 1/4"	1 1/4"	1 1/4"	1 1/4"	1 1/4"
Ritorno impianto di raffrescamento Cooling system return	B	1 1/4"	1 1/4"	1 1/4"	1 1/4"	1 1/4"	1 1/4"	1 1/4"
Mandata impianto di raffrescamento Cooling system flow	C	1 1/4"	1 1/4"	1 1/4"	1 1/4"	1 1/4"	1 1/4"	1 1/4"
Mandata primario Primary flow	E	1 1/4"	1 1/4"	1 1/4"	1 1/4"	1 1/4"	1 1/4"	1 1/4"
Scarico Drain		1"	1"	1"	1"	1"	1"	1"



INOX

Capacity	Mod. - Trade name		(mm)							Cod. - Part number	
			O.D.	I.D.	A	B	C	E	H		R
100	SS - TNK 100	A	540	400	250	N.A.	502,5	755	985	1010	P1040FJ
185	SS - TNK 200	A	640	500	275	N.A.	500	945	1160	1200	P2050FJ
288	SS - TNK 300	B	690	550	275	430	580	1195	1430	1470	P3055FJ
484	SS - TNK 500	C	740	600	300	530	760	1680	1945	1980	P5060FJ
576	SS - TNK 600		790	650	330	560	790	1710	1990	2020	P6065FJ
804	SS - TNK 800		890	750	355	585	815	1735	2040	2100	P8075FJ
990	SS - TNK 900		930	790	380	660	940	1860	2210	2250	P9079FJ

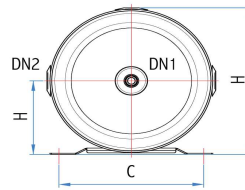
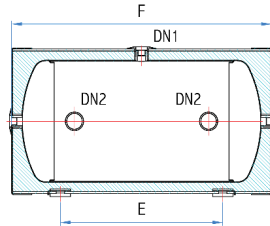
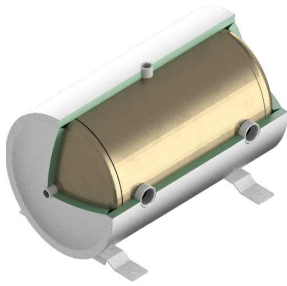
Disponibili pozzetti porta sonda in AISI 316 (vedere pagina 52) - Sensor pockets made from AISI 316 stainless steel are displayed at page 52.

Capacità - Capacity	L	100	185	288	484	576	804	990
Dispersioni - Heat loss $\Delta T=20-50^{\circ}C$.	W	27	41	56	85	101	133	137



DIMENSIONI - DIMENSIONAL DATA

SS - TNK 20 - 40



		20	40
Entrata / Uscita primario Primary flow / return	DN1	1"	1 1/4"
Mandata / Ritorno impianto di raffresc. Radiant cooling system flow / return	DN1	1"	1 1/4"
Sonde Control and safety devices	DN2	1/2"	1/2"
Scarico Drain	DN2	1/2"	1/2"

(L)		(mm)								
Capacity	Mod. - Trade name	O.D	I.D	A	B	C	E	H	F	Cod. - Part number
20	SS - TNK 20	-	-	-	185	320	300	366	600	P0224FJ
40	SS - TNK 40	-	-	-	185	320	400	366	640	P0430FJ

Capacità - Capacity	L	20	40
Dispersioni - Heat loss $\Delta T=20-50^{\circ}\text{C}$.	W	42	54

DATI TECNICI - TECHNICAL DATA

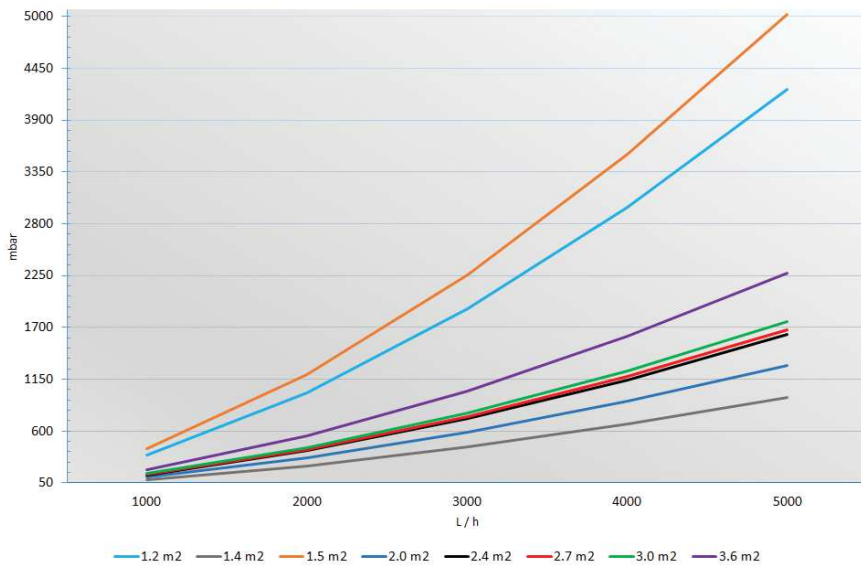
- Normativa - Design: PED 2014/68/DE, Ecodesign 814/2013, Energy Labelling 812/2013
- Temperatura massima d'esercizio - Design Temperature: 99 °C
- Pressione massima d'esercizio - Design Pressure: 3 bar
- Materiali - Materials: Acciaio inossidabile - Stainless Steel A316L
- Coibentazione Esterna - Outer insulation :

	TNK 20 - 40	TNK 100 - 900
Materiale - Material:	-	PUR Flessibile da blocco - Expanded Soft Polyurethane
Spessore - Thickness:	-	50 mm
Densità - Density:	-	16 kg/m ³
Conduttività termica - Thermal conductivity:	-	0,039 W / mK

- Rivestimento - Outer casing:

	TNK 20 - 40	TNK 100 - 900
Materiale - Material:	PVC	PVC
Spessore - Thickness:	5 mm	5 mm
Colore - Colour:	Grigio - Grey RAL #9006	Grigio - Grey RAL #9006

INOX



Perdita di carico scambiatori a serpentina
 Fluido primario: soluzione acquosa 40%
 in peso di glicole Fluido primario T=80 °C

Heat Exchangers Pressure Drop
 Fluid: Water / glycol comprising 40%
 by weight of Glycol Primary T=80 °C

DATI TECNICI - TECHNICAL DATA

- **Normativa - Design** PED 2014/68/EU, Ecodesign 814/2013, Energy Labelling 812/2013
- **Temperatura massima d'esercizio - Design Temperature**
 - Bollitore - Cylinder 99 °C
 - Scambiatori di calore - Heat exchanger 110 °C
- **Pressione massima d'esercizio - Design Pressure**
 - Bollitore - Cylinder 6 bar
 - Scambiatori di calore - Heat exchanger 10 bar

MATERIALI - MATERIALS

Bollitore - Cylinder
 Scambiatori di calore - Heat exchanger
 Coibentazione - Insulation
 SS-STD 170-300
 SS-STD 400-1000
 Rivestimento - Outer casing

Acciaio Inossidabile - Stainless Steel AISI 316L
 Acciaio Inossidabile - Stainless Steel AISI 316L
 40 kg/m³ PUR
 EPS 80 + Grafite
 280 μm PUR

